



The Lesson of Trafalgar:

Superior strategy, innovative tactics, and bold leadership can prevail even over larger numbers and greater resources.

info@trf-grp.com

thetrafalgargroup.org

 The Trafalgar Group

 @trafalgar_group

Nevada Statewide Presidential Survey

August 2024

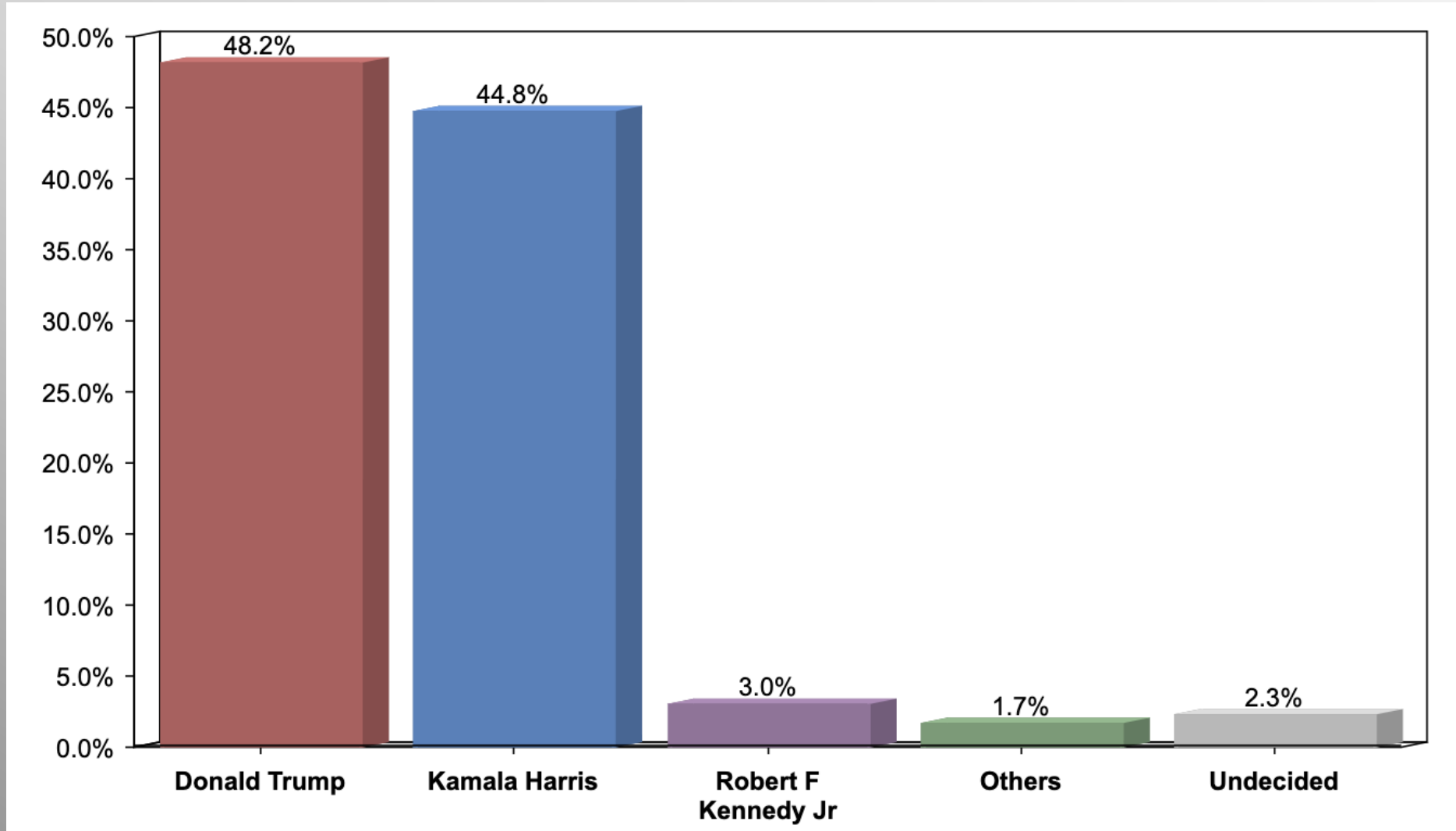
Nevada Survey

- **Conducted 08/06/24 - 08/08/24**
- **1087 Respondents**
- **Likely 2022 General Election Voters**
- **Response Rate: 1.81%**
- **Margin of Error: 2.9%**
- **Confidence: 95%**
- **Response Distribution: 50%**
- **Methodology: [TheTrafalgarGroup.org/Polling-Methodology](https://www.TheTrafalgarGroup.org/Polling-Methodology)**

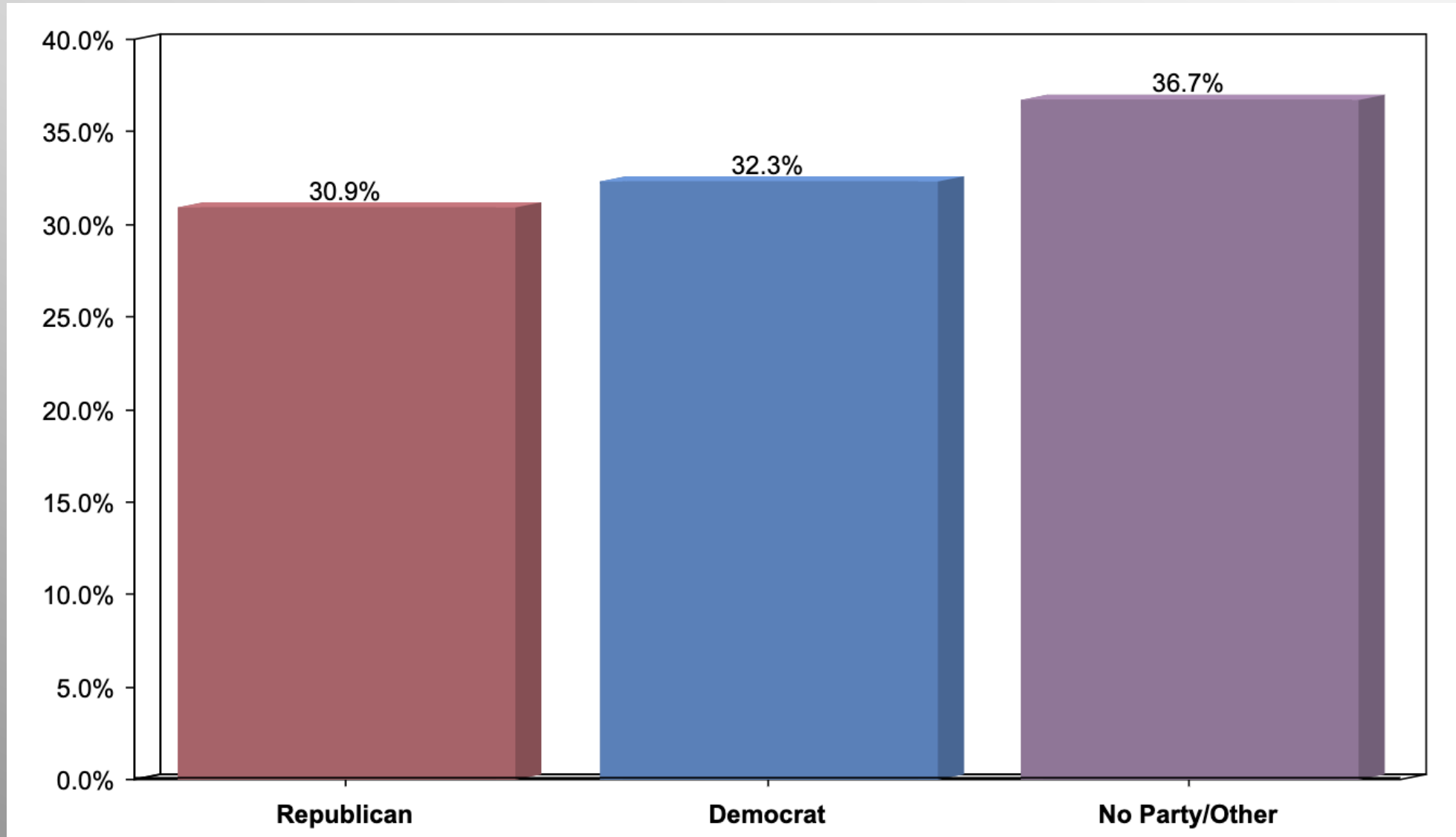


NV Presidential Ballot

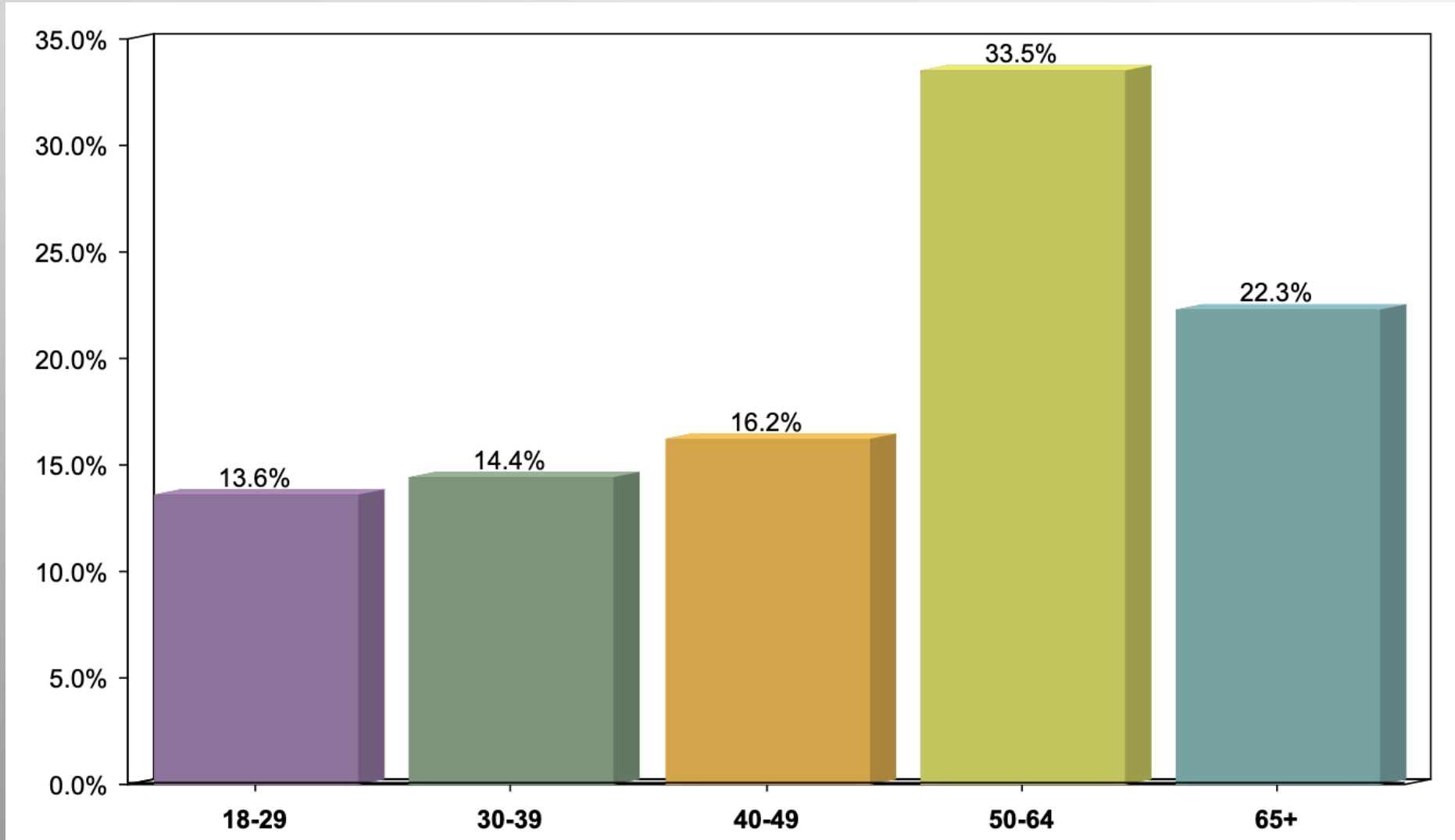
If the election for president were held today, for whom would you vote?



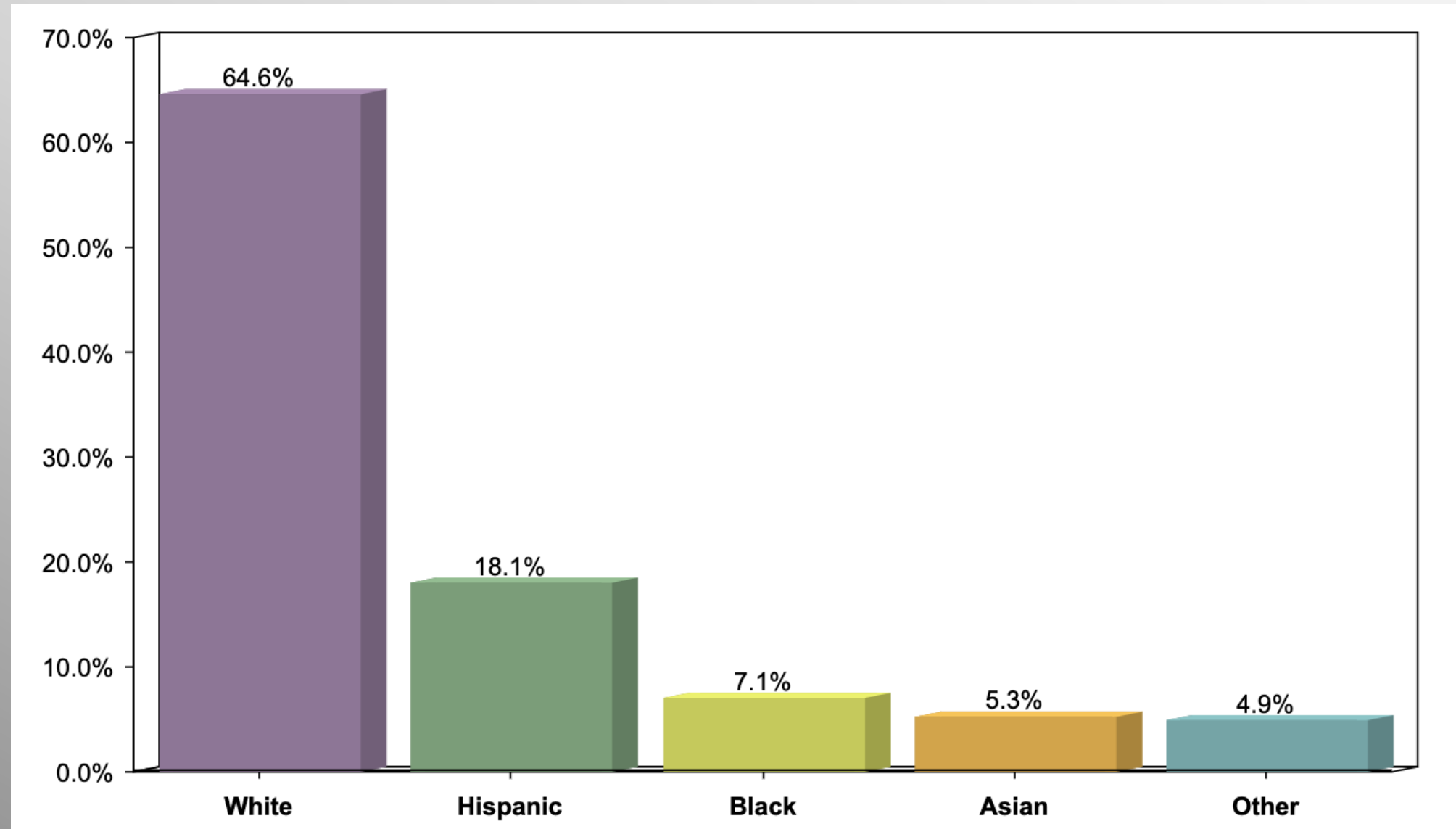
Party Participation



Age Participation



Ethnicity Participation



Gender Participation

